



Marine Rigging and Parts INFO EXCHANGE



Yamaha Marine

6/14/18 - RP2018-003

FUEL FEED KIT (LOW-PRESSURE FUEL PUMP ASSEMBLY REPLACEMENT)

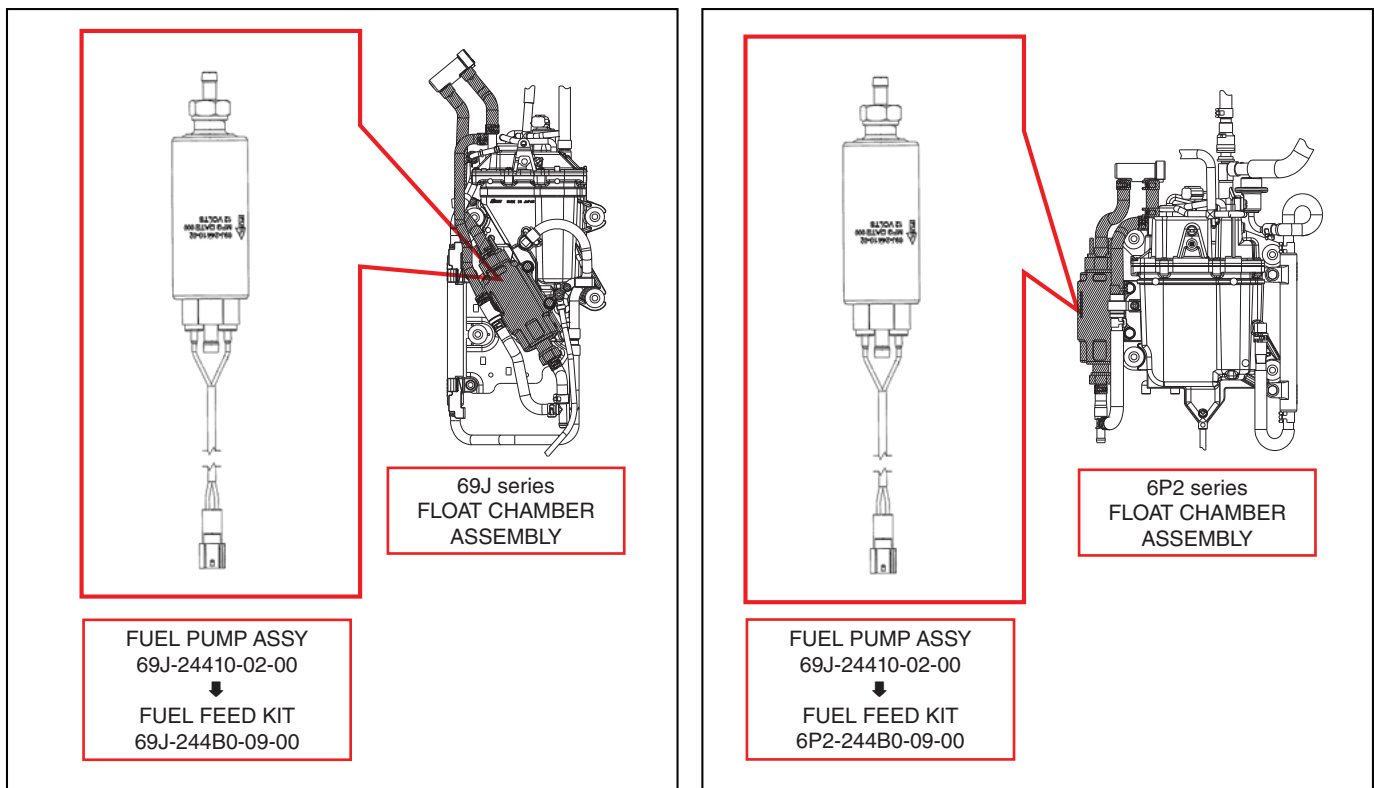
MODEL(S): F(L)200A, F(L)200B, F(L)225A, F225C, F(L)200C, F(L)225B, F(L)250A

PART #: 69J-244B0-09-00 and 6P2-244B0-09-00

YEARS: 2011 and Earlier

i INTRODUCTION

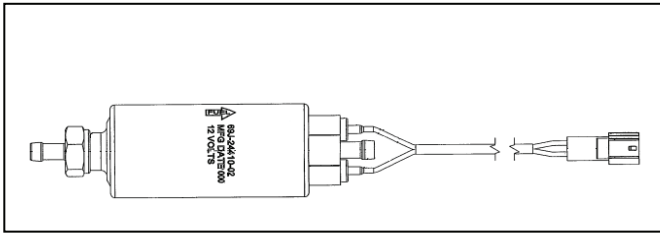
Two low-pressure fuel pump attachment kits (fuel feed kits) are now available for use if the low-pressure fuel pump on an affected model requires replacement. These kits use a new 6CB-type pump which supersedes the previous 69J-type low-pressure fuel pump, now discontinued. As described in this Info Exchange, there are two fuel feed kits (69J-244B0-09-00 and 6P2-244B0-09-00). Be sure to use the correct one for the outboard motor model being repaired.



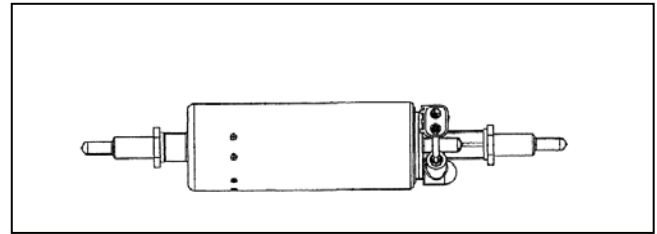
The new part can be identified by the external shape of the low-pressure fuel pump included in the kit.

Previous

New

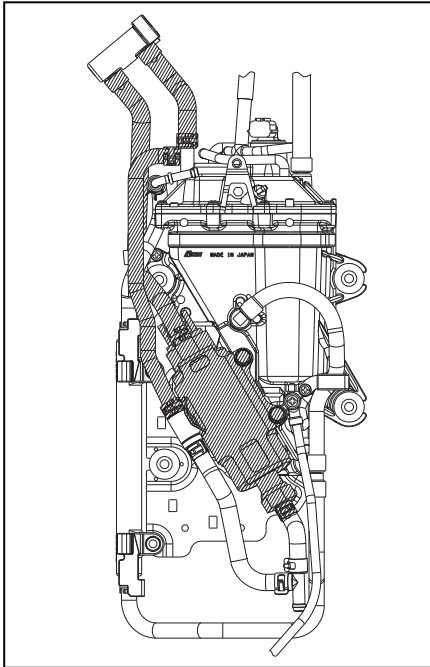


69J-24410-02-00

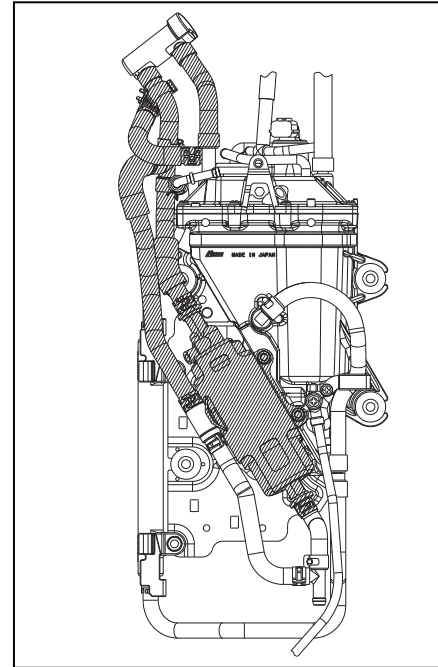


6CB-24410-09-00

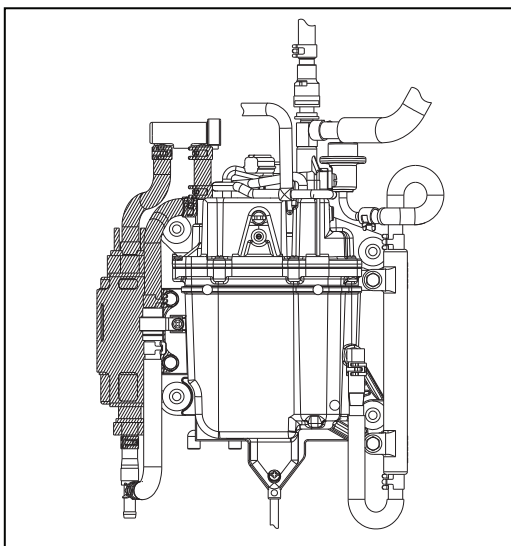
The shaded parts are replaced.



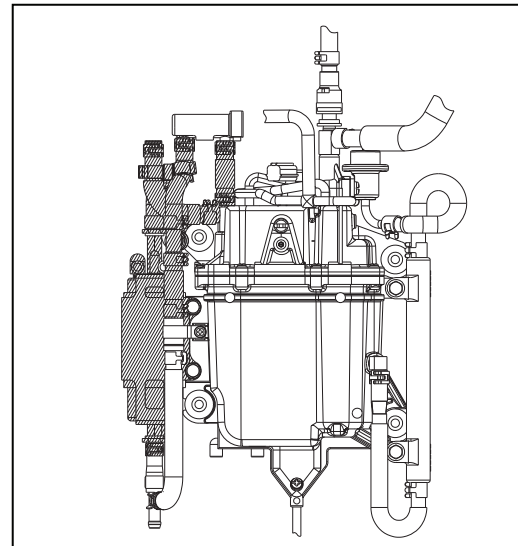
69J FLOAT CHAMBER
ASSEMBLY
Previous component parts



69J FLOAT CHAMBER
ASSEMBLY
New component parts



6P2 FLOAT CHAMBER
ASSEMBLY
Previous component parts



6P2 FLOAT CHAMBER
ASSEMBLY
New component parts

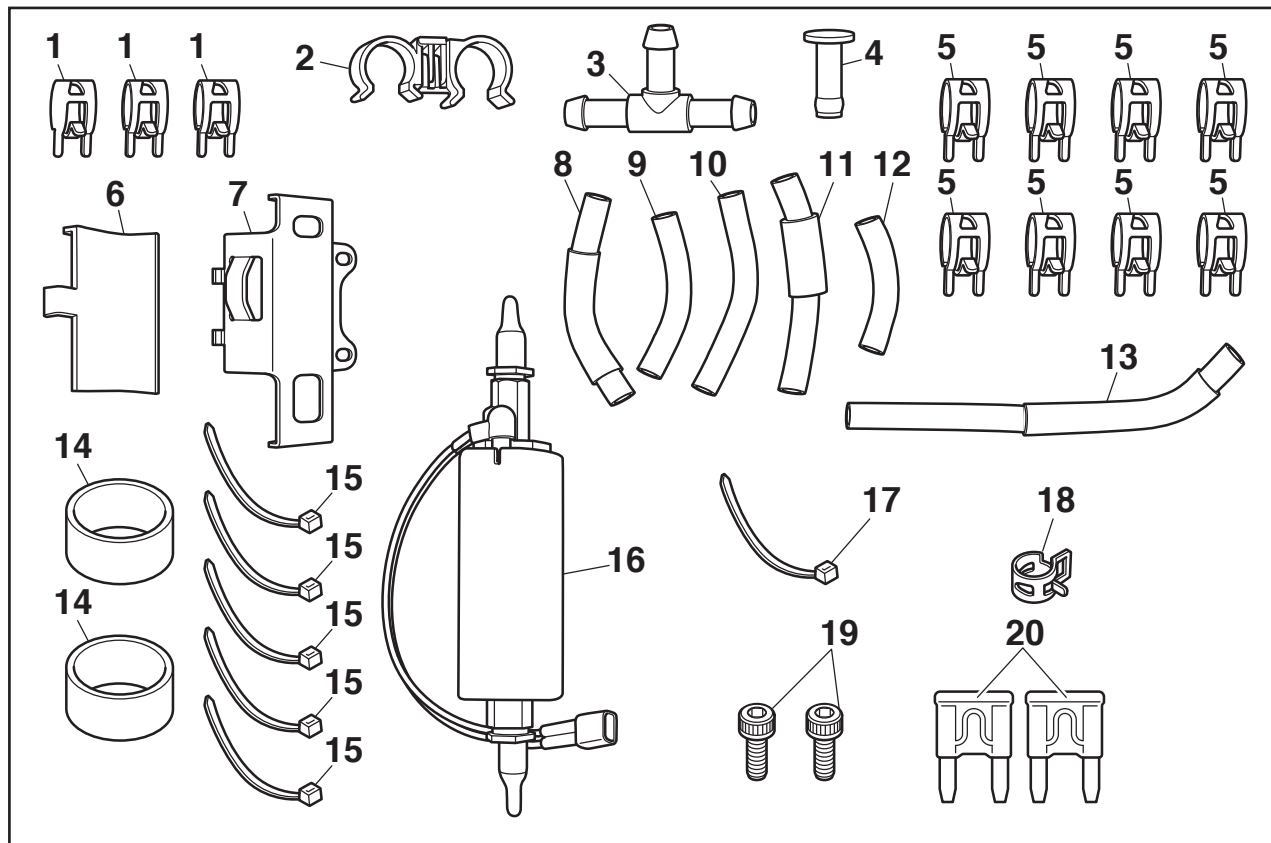


PARTS INFORMATION

Use the correct kit depending on the outboard motor being repaired.

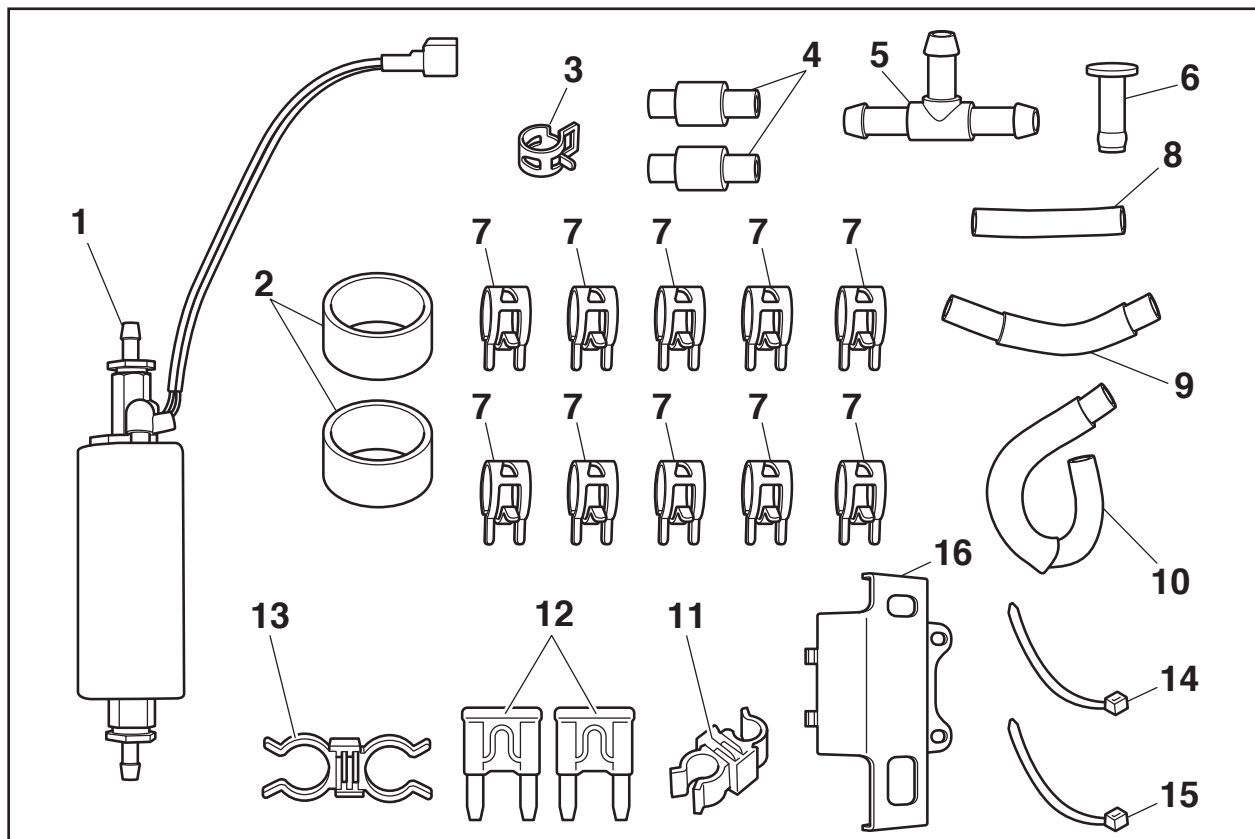
69J Series: F(L)200A / F(L)200B / F(L)225A

Part name	Previous part number	New component parts			
		New part name New part number	No.	Part name	Q'ty
FUEL PUMP ASSY	69J-24410-02-00	FUEL FEED KIT 69J-244B0-09-00	1	CLAMP	3
			2	HOLDER	1
			3	JOINT	1
			4	PLUG	1
			5	CLAMP	8
			6	SPACER	1
			7	BRACKET	1
			8	HOSE	1
			9	HOSE	1
			10	HOSE	1
			11	HOSE	1
			12	HOSE	1
			13	HOSE	1
			14	GROMMET	2
			15	PLASTIC TIE (L)	5
			16	LOW-PRESSURE FUEL PUMP (6CB-24410-09-00)	1
			17	PLASTIC TIE (S)	1
			18	CLAMP	1
			19	BOLT	2
			20	FUSE	2



6P2 Series: F225C / F(L)200C / F(L)225B / F(L)250A

Part name	Previous part number	New component parts			
		New part name New part number	No.	Part name	Q'ty
FUEL PUMP ASSY	69J-24410-02-00	FUEL FEED KIT 6P2-244B0-09-00	1	LOW-PRESSURE FUEL PUMP (6CB-24410-09-00)	1
			2	GROMMET	2
			3	CLAMP	1
			4	HOSE	2
			5	JOINT	1
			6	PLUG	1
			7	CLAMP	10
			8	HOSE	1
			9	HOSE	1
			10	HOSE	1
			11	HOLDER	1
			12	FUSE	2
			13	HOLDER	1
			14	PLASTIC TIE (S)	1
			15	PLASTIC TIE (L)	1
			16	COVER	1



 **SERVICE PROCEDURE**

Replacements must be performed following the instructions in the INSTALLATION MANUAL supplied with the LOW-PRESSURE FUEL PUMP ATTACHMENT KIT (FUEL FEED KIT) and also provided with this Info Exchange on the following pages.

Info Exchanges are for information only and do not provide authorization for warranty coverage.



F(L)200A, F(L)200B, F(L)225A

LOW-PRESSURE FUEL PUMP ATTACHMENT KIT INSTALLATION MANUAL

This manual explains how to install the low-pressure fuel pump attachment kit on the outboard motor. Read the information given below and install the low-pressure fuel pump attachment kit.

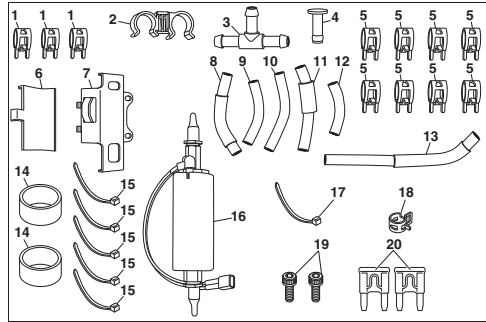
If you have any questions about installing, refer to the Service Manual.

- In this Installation Manual, particularly important information is distinguished in the following ways.

TIP:

A TIP provides key information to make procedures easier or clearer.

COMPONENTS



69J-2819K-E0

No.	Part name	Q'ty	Remarks
1	Clamp	3	68V-24519-00
2	Holder	1	
3	Joint	1	
4	Plug	1	Do not use for the 69J-14180-04 vapor separator.
5	Clamp	8	68V-13577-00
6	Spacer	1	
7	Bracket	1	
8	Hose	1	Do not use for the 69J-14180-04 vapor separator.
9	Hose	1	Do not use for the 69J-14180-04 vapor separator.
10	Hose	1	Use only for the 69J-14180-04 vapor separator.
11	Hose	1	
12	Hose	1	
13	Hose	1	
14	Grommet	2	
15	Plastic tie (long)	5	
16	Low-pressure fuel pump	1	
17	Plastic tie (short)	1	
18	Clamp	1	69J-14137-00
19	Bolt	2	
20	Fuse	2	

VAPOR SEPARATOR REMOVAL

Before installing the low-pressure fuel pump attachment kit, the vapor separator assembly must be removed. To remove the vapor separator assembly, refer to the Service Manual.

Removal procedure

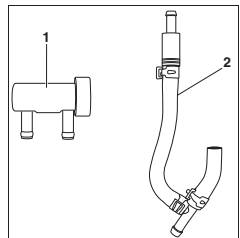
1. Remove the top cowling.
2. Remove the flywheel cover.
3. Remove the ECM bracket.
4. Reduce the fuel pressure.
5. Drain the fuel from the vapor separator.
6. Remove the intake silencers.
7. Remove the vapor separator.

LOW-PRESSURE FUEL PUMP REMOVAL

Remove the low-pressure fuel pump. To remove the low-pressure fuel pump, refer to the Service Manual.

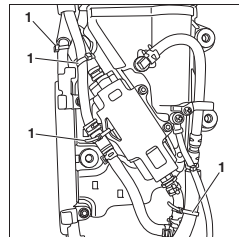
Removal procedure

Some of the removed parts can be reused. Use the following procedure to remove the parts that can be reused.



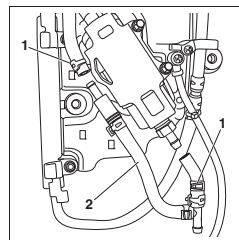
- 1 Fuel filter assembly
- 2 Fuel hose assembly

1. Cut the plastic ties. (4 locations)



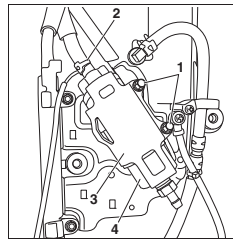
- 1 Plastic tie

2. Remove the fuel hose assembly "2" (reusable) by removing the clamps "1".



- 1 Clamp
- 2 Fuel hose assembly

3. Remove the bolts "1", bracket "3", and clamp "2", and then remove the low-pressure fuel pump "4".



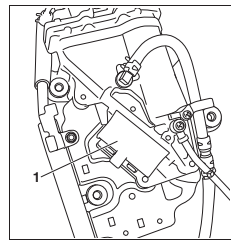
- 1 Bolt
- 2 Clamp
- 3 Bracket
- 4 Low-pressure fuel pump

LOW-PRESSURE FUEL PUMP INSTALLATION

Make sure to install the clamps so that they are facing in the directions shown in the illustrations.

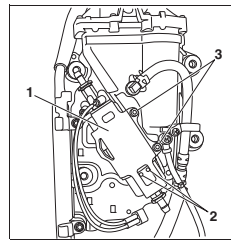
Installation procedure

1. Install the grommets to the low-pressure fuel pump.
2. Install the spacer to the mounting location of the low-pressure fuel pump.



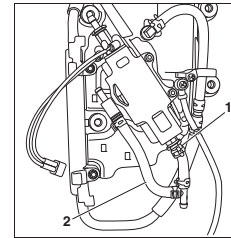
- 1 Spacer

3. Install the bracket "1" to the low-pressure fuel pump, and then secure the bracket to the vapor separator using the bolts "3". Check that the 2 blue marks "2" are visible through the opening in the bracket when the bracket is installed.



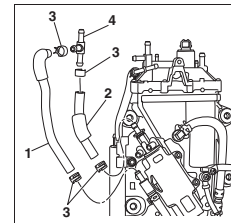
- 1 Bracket
- 2 Blue mark
- 3 Bolt

4. Connect the fuel hose assembly "2" (reusable) to the low-pressure fuel pump, and then fasten the hose using the clamp "1".



- 1 Clamp (69J-14137-00)
- 2 Fuel hose assembly

5. Install the hose "1" and joint "4" to the fuel hose assembly, and then fasten them using the clamps "3". Connect the hose "2" to the low-pressure fuel pump and joint, and then fasten the hose using the clamps.



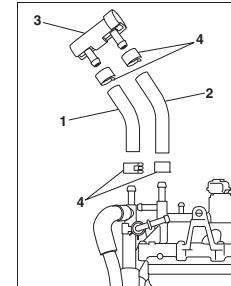
- 1 Hose
- 2 Hose

- 3 Clamp (68V-13577-00)
- 4 Joint

TIP:

Make sure to install the hose "2" so that the end of the hose with the mark is pointing downward.

6. Install the hoses "1" and "2" and fuel filter assembly "3" (reusable), and then fasten the hoses using the clamps "4".

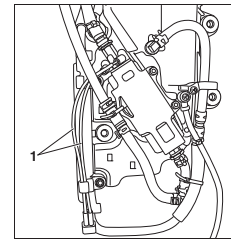


- 1 Hose
- 2 Hose
- 3 Fuel filter assembly
- 4 Clamp (68V-13577-00)

TIP:

- Make sure to install the hoses so that the ends of the hoses with the mark are pointing upward.
- Use the long hose "2" only when installing the hoses and fuel filter assembly to the 69J-14180-04 vapor separator.

10. Fasten the low-pressure fuel pump leads "1" using the holder on the fuel cooler.

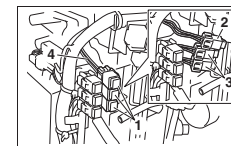


- 1 Low-pressure fuel pump lead

VAPOR SEPARATOR INSTALLATION

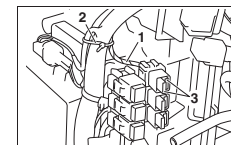
Installation procedure

1. Remove the caps "1".
2. Remove fuse holders "3".
3. Remove fuse holder "2".
4. Replace the fuel feed pump fuses.
5. Wrap tape around the lead "4" for fuse holder "2".



- 1 Cap
- 2 Fuse holder
- 3 Fuse holders
- 4 Lead

6. Fasten the lead for fuse holder to the wiring harness using the plastic tie "2".

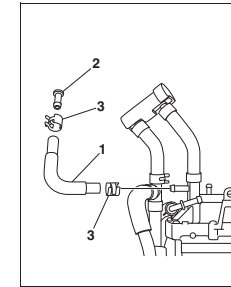


- 1 Lead
- 2 Plastic tie (short)
- 3 Fuel feed pump fuses

TIP:

After fastening the lead, cut off the excess end of the plastic tie.

7. Connect the hose "1", fit the plug "2" into the end of the hose, and then fasten the hose and plug using the clamps "3".

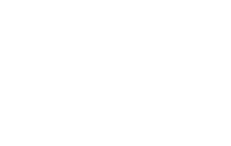


- 1 Hose
- 2 Plug
- 3 Clamp (68V-24519-00)

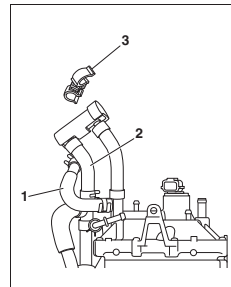
TIP:

When installing the low-pressure fuel pump attachment kit to the 69J-14180-04 vapor separator, omit this step.

8. Fasten the hoses "1" and "2" using the holder "3".

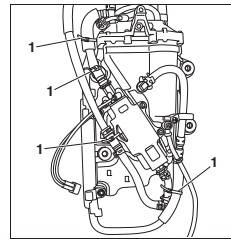


- 1 Hose



- 1 Hose
- 2 Hose
- 3 Holder

9. Fasten the hoses using the plastic ties "1". (4 locations)

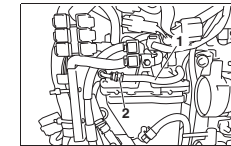


- 1 Plastic tie (long)

TIP:

When installing the 69J-14180-04 vapor separator attachment kit, use one of the included plastic ties.

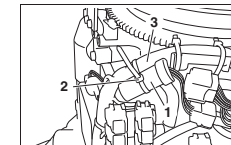
7. Install the bolts.
8. Connect the fuel cooler hoses.
9. Connect the pressure regulator hose "1", and then fasten the hose using the included clamp "2".



- 1 Pressure regulator hose
- 2 Clamp (68V-24519-00)

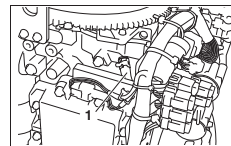
10. Connect the other hoses. (To connect the hoses, refer to the Service Manual.)

11. Connect the couplers for the high-pressure fuel pump and low-pressure fuel pump.
12. Fasten the fuel filter cover "1" to the wiring harness "3" using the plastic tie "2" (reusable).



- 1 Fuel filter cover
- 2 Plastic tie
- 3 Wiring harness

13. Check that the hose "1" behind the fuses is routed as shown in the illustration.



- 1 Hose





F225C, F(L)200C, F(L)225B, F(L)250A

LOW-PRESSURE FUEL PUMP ATTACHMENT KIT INSTALLATION MANUAL

This manual explains how to install the low-pressure fuel pump attachment kit on the outboard motor.

Read the information given below and install the low-pressure fuel pump attachment kit.

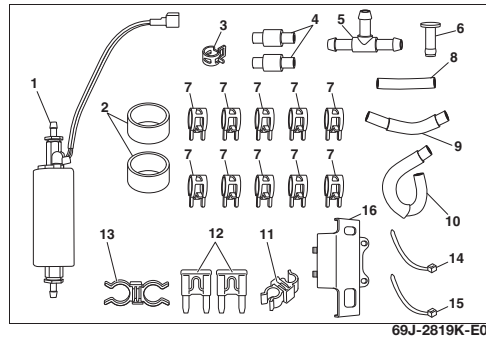
If you have any questions about installing, refer to the Service Manual.

- In this Installation Manual, particularly important information is distinguished in the following ways.

TIP:

A TIP provides key information to make procedures easier or clearer.

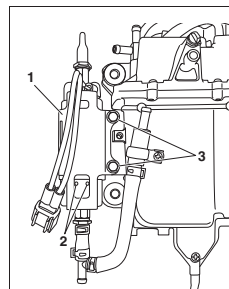
COMPONENTS



69J-2819K-E0

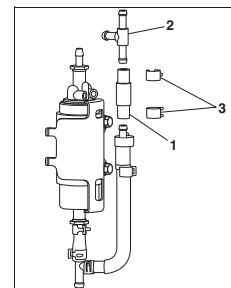
No.	Part name	Q'ty	Remarks
1	Low-pressure fuel pump	1	
2	Grommet	2	
3	Clamp	1	69J-14137-00
4	Hose	2	
5	Joint	1	
6	Plug	1	
7	Clamp	10	68V-13577-00
8	Hose	1	
9	Hose	1	
10	Hose	1	
11	Holder	1	
12	Fuse	2	
13	Holder	1	
14	Plastic tie (short)	1	
15	Plastic tie (long)	1	
16	Cover	1	

3. Install the cover "1" to the low-pressure fuel pump, and then secure the cover to the vapor separator using the bolts "3" (reusable). Check that the 2 red marks "2" are visible through the opening in the cover when the cover is installed.



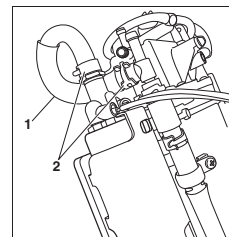
- 1 Cover
2 Red mark
3 Bolt

4. Install the hose "1" and joint "2", and then fasten them using the clamps "3".



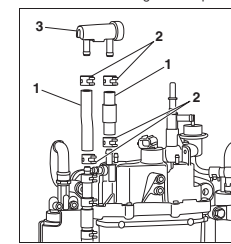
- 1 Hose
2 Joint
3 Clamp (68V-13577-00)

5. Connect the hose "1" to the joint and low-pressure fuel pump, and then fasten the hose using the clamps "2".



- 1 Hose
2 Clamp (68V-13577-00)

6. Install the hoses "1" and fuel filter assembly "3" (reusable), and then fasten the hoses using the clamps "2".

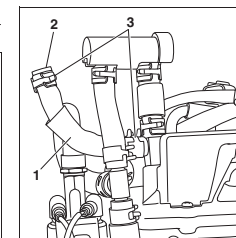


- 1 Hose
2 Clamp (68V-13577-00)
3 Fuel filter assembly

TIP:

Make sure to install the hoses so that the ends of the hoses with the mark are pointing upward.

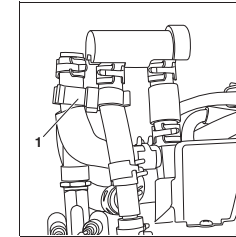
7. Connect the hose "1" to the vapor separator joint, fit the plug "2" into the end of the hose, and then fasten the hose and plug using the clamps "3".



- 1 Hose
2 Plug
3 Clamp (68V-13577-00)

TIP: Install the hose so that the plug is fitted into the end of the hose with the mark.

8. Fasten the hoses "1" using the holder.



- 1 Holder

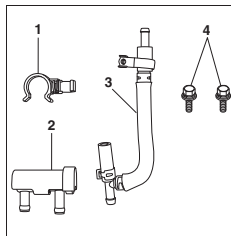
9. Secure the fuel hose assembly using the screw "4".

VAPOR SEPARATOR REMOVAL

Before installing the low-pressure fuel pump attachment kit, the vapor separator assembly must be removed. To remove the vapor separator assembly, refer to the Service Manual.

Removal procedure

1. Remove the top cowling.
2. Remove the flywheel cover.
3. Reduce the fuel pressure.
4. Disconnect the quick connector.
5. Drain the fuel from the vapor separator.
6. Remove the intake silencer.
7. Remove the intake manifolds.
8. Remove the vapor separator assembly.



- 1 Holder
2 Fuel filter assembly
3 Fuel hose assembly
4 Bolt

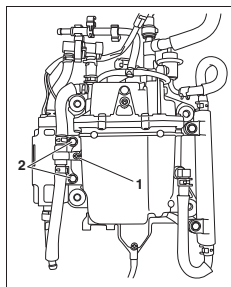
LOW-PRESSURE FUEL PUMP REMOVAL

Remove the low-pressure fuel pump. To remove the low-pressure fuel pump, refer to the Service Manual.

Removal procedure

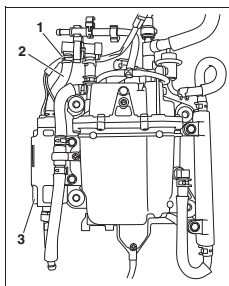
Some of the removed parts can be reused. Use the following procedure to remove the parts that can be reused.

1. Remove the screw "1" and bolts "2" (reusable).



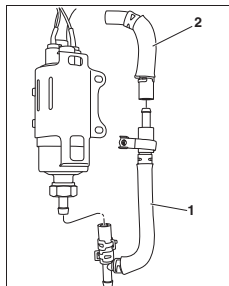
- 1 Screw
2 Bolt

2. Remove the clamp "1", and then remove the hose "2" and low-pressure fuel pump "3".



- 1 Clamp
2 Hose
3 Low-pressure fuel pump

3. Remove the fuel hose assembly "1" (reusable) from the low-pressure fuel pump, and then disconnect the fuel hose "2" from the fuel hose assembly by removing the clamp.



- 1 Fuel hose assembly
2 Fuel hose

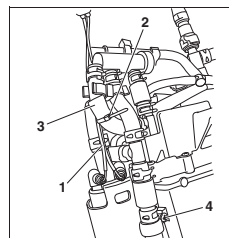
LOW-PRESSURE FUEL PUMP INSTALLATION

Make sure to install the clamps so that they are facing in the directions shown in the illustrations.

Installation procedure

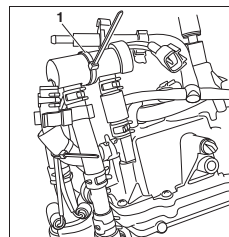
1. Install the grommets to the low-pressure fuel pump.
2. Connect the fuel hose assembly (reusable) to the low-pressure fuel pump, and then fasten the hose using the clamp (69J-14137-00).

10. Fasten the low-pressure fuel pump leads "1" to the hose "3" using the short plastic tie "2".



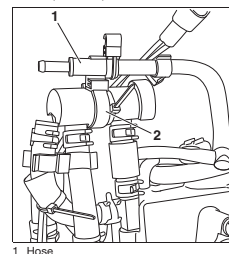
- 1 Low-pressure fuel pump lead
2 Plastic tie (short)
3 Hose
4 Screw

11. Fasten the low-pressure fuel pump leads to the fuel filter assembly using the long plastic tie "1".



- 1 Plastic tie (long)

12. Fasten the hose "1" using the holder "2" (reusable).



- 1 Hose
2 Holder

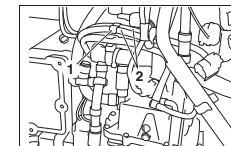
TIP:

Make sure that the low-pressure fuel pump leads are not pinched by the holder.

VAPOR SEPARATOR INSTALLATION

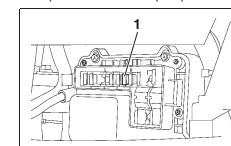
Installation procedure

1. Install the vapor separator assembly. (To install the vapor separator assembly, refer to the Service Manual.)
2. Fasten the hose "2" using the included holder "1" as shown in the illustration.

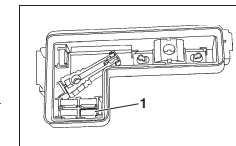


- 1 Holder
2 Hose

3. Replace the fuel feed pump fuses "1".



- 1 Fuel feed pump fuse



- 1 Fuel feed pump fuse